

# Wealth from Water Site Information Sheet

# WfW 0473

## Site Information

**Easting:** 532385  
**Northing:** 5334995 AMG zone: 55  
**Date Description:** 19/10/10  
**Elevation (m):** 215  
**Aspect (degrees):** 6.3

**Rainfall:** 470  
**Runoff:** No runoff  
**Drainage:** Imperfectly drained  
**Permeability:** Slow

WfW0473

0-5



5-13



13-32



32-57



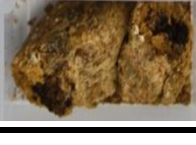
57-83



83-114



114-144



## Soil Description

A1	0 - 0.13 m	Very dark brown (10YR2/2-Moist); Clay loam; Abrupt change to -
B2	0.13 - 0.31 m	Brown (7.5YR4/4-Moist); Mottles, 2-10%, ; Medium clay; Few (2 - 10 %), Ferruginous, Nodules, Coarse (6 - 20 mm) segregations; Clear change to -
BC	0.31 - 0.83 m	Very pale brown (10YR7/4-Moist); Substrate influence, 10-20%, ; Medium clay; 2-10%, coarse gravelly, 20-60mm, subangular, Dolerite, coarse fragments; Gradual change to -
2C	0.83 - 1.44 m	Light yellowish brown (10YR6/4-Moist); Substrate influence, 10-20%, ; Sandy clay loam; 10-20%, coarse gravelly, 20-60mm, subangular, Dolerite, coarse fragments;

## Land Form Pattern (300m radius from site)

**Rel/Slope Class:** Level plain <9m <1%

## Stoniness

2-10%, cobbly, 60-200mm, .

## Land Form Element (20m radius from site)

**Slope Class:** Level  
**Elem. Type:** Terrace flat  
**Morph. Type:** Flat

## Geology

**Observed:** No Data  
**Mapped:** Quaternary Alluvium

## Soil Classification

**Australian Soil Classification:** Brown Dermosol  
**ASC Confidence:** No analytical data and little or no knowledge of this soil.

## Notes

**Site:** No Note  
**General:** No Note