

441132

LADY BARRON

Low hills formed on Devonian granite occur near Lady Barron in the south of Flinders Island.

Rock outcrops are common on the crests, and sand soils of varying depths have developed on all components.

The vegetation is dominated by blue gum, Smithton peppermint, *Acacia mucronata* and she-oak.

Most of the area remains undeveloped, although some parts are used for recreation and grazing.

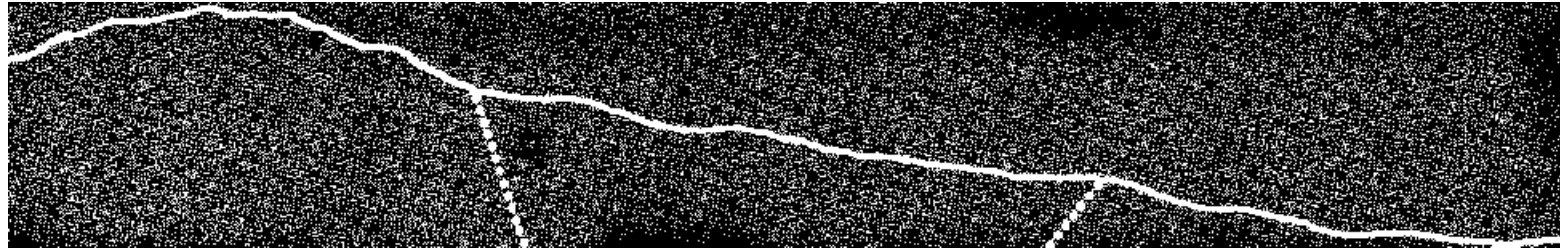
The sandy soils are particularly prone to wind erosion.

LAND SYSTEM

441132

Lady

Barron



COMPONENT	1	2	3
PROPORTION %	30	40	30
CLIMATE	Average Annual Rainfall 750-1 000 mm		
GEOLOGY	Mainly rock outcrops	Devonian granite	
TOPOGRAPHY Land form Position Average Sideslope °	Crests 10	Low hills Mid slopes 7	Lower slopes 3
NATIVE VEGETATION Structure	Low open-forest	Open-forest	
Association	Blue gum, <i>Acacia mucronata</i> , she-oak, <i>Kunzea ambigua</i> , <i>Poa</i> spp.	Blue gum, smithton peppermint, manuka, she-oak, bracken	Blue gum, smithton peppermint, <i>Acacia mucronata</i> , bracken
SOIL	Shallow, grey (5 YR 5/1) sand soil, uniform texture	Light grey (10 YR 7/1) sand soil, uniform texture	Brown (10 YR 5/3) sand soil, uniform texture
Surface Texture Permeability Average Depth m	0.2	Loamy sand High 1.5	0.8
PRESENT LAND USE	Nature conservation, recreation		Nature conservation, recreation, grazing
HAZARDS	Severe wind erosion		Moderate wind erosion