

482121

PETRIFACTION BAY

Undulating plains formed on Tertiary basalt are found near Petrifaction Bay in the south of Flinders Island. This system is similar in many ways to Hauland Land System (482135), but differs in soils and topography.

Dark brown to dark reddish brown gradational soils have developed on these plains. Waterworn quartz

pebbles are often found scattered throughout the soil profiles. These soils are similar to those in the Thule Soil Association as described by Dimmock (1957).

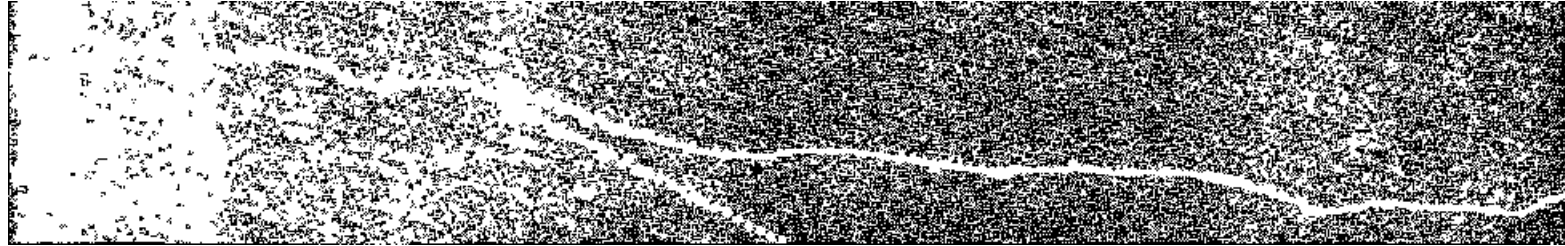
An open-scrub of paperbark is the only native vegetation found on this system as most of the land has been cleared and sown to pasture for grazing.

Sheet erosion is the principal hazard.

LAND SYSTEM

482121

Petrifaction Bay



COMPONENT	1	2
PROPORTION %	30	70
CLIMATE	Average Annual Rainfall 750 I 000 mm	
GEOLOGY	Tertiary basalt	
TOPOGRAPHY , Land form Position Average Sideslope°	Small crests and plateaux 2	Undulating plains Lower plateaux and swales 1
NATIVE VEGETATION Structure Association	Open-scrub Paperbark	
SOIL Surface Texture Permeability Average Depth m	Dark brown (7.5 YR 3/2) gradational soil Moderate 0.8	Dark reddish brown (5 YR 3/2) gradational soil, coarse structure Clay loam Low 1.2
PRESENT LAND USE	Grazing	
HAZARDS	Moderate sheet erosion	Low sheet erosion