

493112

ROBBINS ISLAND

Extensive areas of flat to very gently undulating sand plains occupy the low country of Robbins Island with smaller occurrences on Walker, Hunter and Three Hummock Islands. Field observations of this system were made only on Robbins Island. The other occurrences were determined by reference to aerial photo interpretation, the Geological Map of Tasmania, published by the Mines Department (1976), and similar terrain in north-west Tasmania described as Plains land system by Richley (1978).

The soils of the major component are similar in many respects to the Naracoopa, Lappa and Taroona sands found on King Island (Stephens and Hosking, 1932). Component No. 3 represents a broad belt of very gently sloping country which surrounds the higher areas of Tertiary basalt (Camp land system) on Robbins Island. The soils here include an assemblage of transitional profiles which

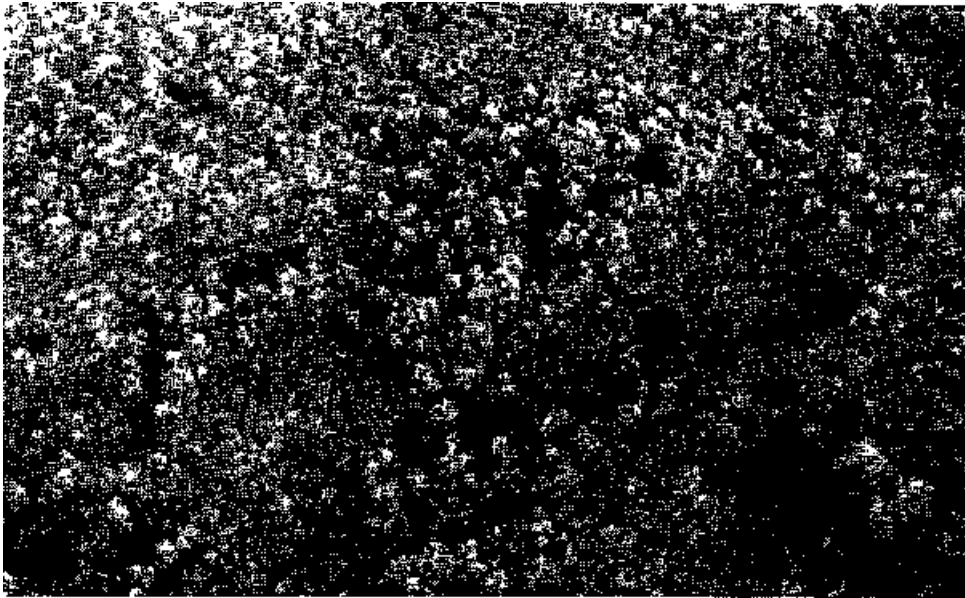
include deep mottled sands, sandy clays, sandy duplex soils and sand profiles over clayey palaeosols. Soils also include areas of saline mud on sites regularly inundated by tidal waters.

A closed scrub of mainly tea-tree and *Melaleuca* spp. probably originally covered these plains with a sedgeland occupying the swamps. Shrub and woodland forms of eucalypts would have been scattered over the plain but they possibly formed an open foresty canopy over the dense scrub understorey on the more argillaceous soils in the zone of transitional profiles.

Large areas have been cleared for grazing but unless aggressively maintained there is a rapid reversion to dense scrub.

Undeveloped areas are important zones of nature conservation.

Waterlogging is the principal threat to land development particularly as the water table rises once the native timber is removed.



Dense scrub beneath scattered taller eucalypts on the very gentle footslopes



Open sedgeland found on component 2

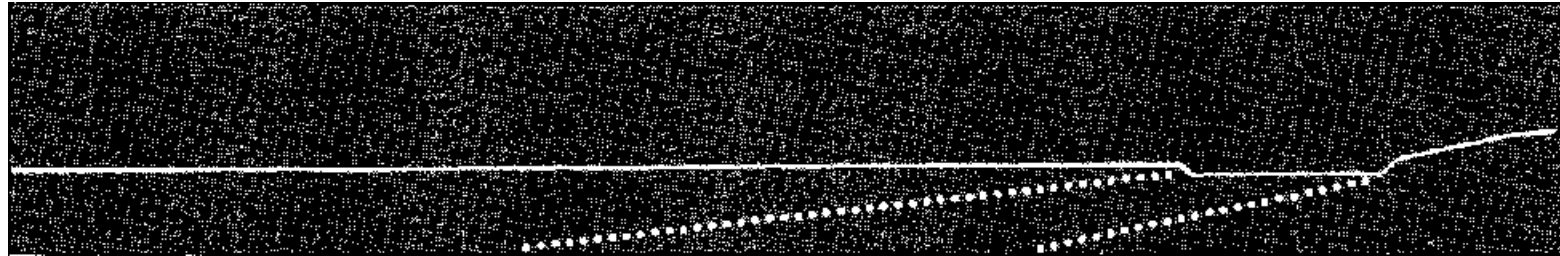


Area converted to improved pasture East Beach land system lies to the right and Camp land system forms the low ridge in the background

LAND SYSTEM

493112

Robbins Island



COMPONENT	1	2	3
PROPORTION %	75	15	10
CLIMATE	Average Annual Rainfall 750-1 000 mm		
GEOLOGY	Quaternary sand, clay deposits		
TOPOGRAPHY Land form Position Average Sideslope ⁰	Plain	Flat plains Swamps <1	Very gentle footslopes
NATIVE VEGETATION Structure Association	Open heath Manuka, honeysuckle, <i>Melaleuca squarrosa</i> , <i>Leptospermum glaucescens</i> , <i>Acacia mucronata</i> , <i>Leucopogon australis</i> , <i>Lepidosperma filiforme</i>	Open sedgeland Sedges	Closed scrub Paperbark, manuka, Smithton peppermint, swamp gum, <i>Juncus</i> sp.
SOIL Surface Texture	Grey (10 YR 5/1) sand, very dark sand B horizon Peaty sand	Very dark organic sand	Complex
Permeability Average Depth m	>1.8	High >1.3	
PRESENT LAND USE	Grazing, nature conservation		
HAZARDS	Moderate wind erosion, waterlogging	High waterlogging	