

495122

BARCLAY'S HILL

Undulating plains and ridges formed on Quaternary limestone deposits are found near Ranga in the south-west of Flinders Island

Soils vary from duplex on the ridges to gradational in the swales These soils closely resemble those of

the Ranga Soil Association described by Dimmock (1957)

Leptospermum spp, and paperbark dominate the woodland vegetation

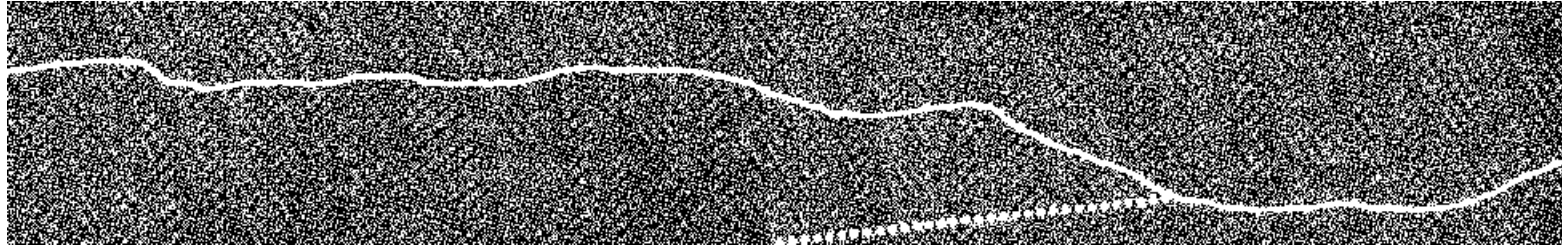
Grazing is the main land use

The principal hazards associated with the sandy soils are wind and sheet erosion

LAND SYSTEM

495122

Barclays Hill



COMPONENT	1	2
PROPORTION %	75	25
CLIMATE	* Average Annual Rainfall 750-1 000 mm	
GEOLOGY	Quaternary limestone deposits	
TOPOGRAPHY Land form Position Average Sideslope °	Ridges 3	Undulating plains and ridges Swales 2
NATIVE VEGETATION Structure Association	Woodland Manuka, paperbark, <i>Leptospermum glaucescens</i> , prickly box, she-oak, blue gum	Low woodland Paperbark, manuka
SOIL	Reddish brown (5 YR 4/4) duplex soil	Reddish brown (5 YR 5/4) gradational soil
Surface Texture Permeability Average Depth m	Sandy loam 1.0	Moderate Sandy clay loam 1.8
PRESENT LAND USE	Grazing	
HAZARDS	High wind erosion	Moderate wind and sheet erosion