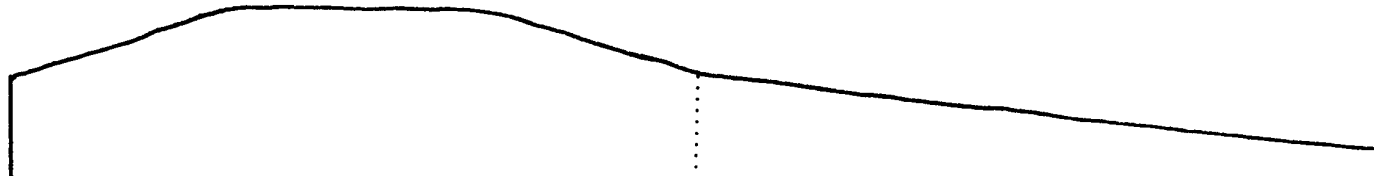


LAND SYSTEM
Mt Elephant

572252

Area (ha):
1028



COMPONENT		.
PROPORTION (%)	50	50
RAINFALL (mm)	Approximate Annual Rainfall: 1000-1250	
GEOLOGY	Jurassic Dolerite	
TOPOGRAPHY	Rugged Mountains	
Position	Crests/Upper Slopes	Protected Drainage Slopes
Typical Slope(°)	30	15
NATIVE VEGETATION		
structure	(Tall) Open Forest	
Floristic Association (See Appendix 1 for common names)	<i>Eucalyptus delegatensis</i>	<i>Eucalyptus obliqua</i>
	<i>Pomaderris apetala</i>	<i>Eucalyptus brookerana</i>
	<i>Bedfordia salicina</i>	<i>Acacia dealbata</i>
	<i>Gahnia grandis</i>	<i>Pittosporum bicolor</i>
	<i>Pultenaea juniperina</i>	<i>Pomaderris apetala</i>
	<i>Olearia viscosa</i>	<i>Pteridium esculentum</i>
	<i>Phebalium squameum</i>	<i>Dicksonia antarctica</i>
	<i>Lomatia tinctoria</i>	<i>Nothofagus cunninghamii</i>
		<i>Coprosma quadrifida</i>
		<i>Gahnia grandis</i>
	<i>Polystichum proliferum</i>	
	<i>Olearia lirata</i>	
	<i>Blechnum nudum</i>	
	<i>Leptospermum lanigerum</i>	
	<i>Cassinia aculeata</i>	
SOIL		
Surface(A)Texture	Clay Loam	Medium Clay
B Horizon (subsoil) Colour (moist) Texture and primary profile form	Deep extremely stony	Stony clay - Brown
	light clay - Dark yellowish brown (10 YR 4 / 6) .	(10 YR 5 / 3) .
	Gradational .	Uniform.
Pemeability	Moderate	Medium/Low
Typical depth(m)	1.00	0.70
LAND USE	Forestry, Grazing	
HAZARDS	High/Moderate Sheet, Rill, Gully Erosion	

572252

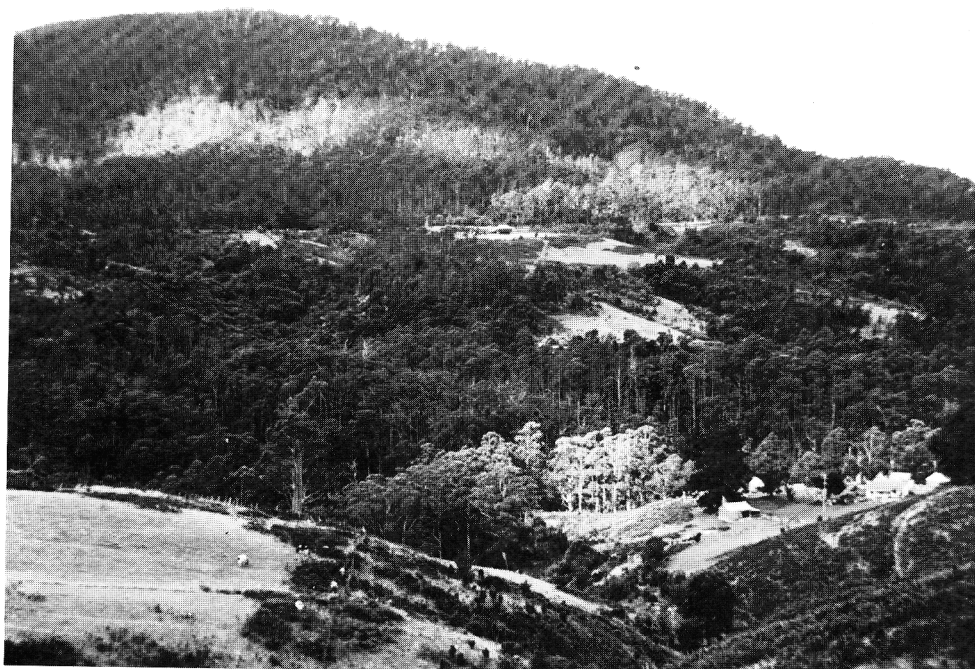
MT ELEPHANT

This land system includes mountainous dolerite country south-east of St Marys behind Gray. It has been extrapolated to include St Patricks Head.

Crests and upper slopes have a deep (1.00 m), stony, gradational soil with a clay loam surface over a dark yellowish brown, light clay. This supports an open to tall open forest dominated by *Eucalyptus delegatensis* with an understorey of *Pomaderris apetala*, *Bedfordia salicina*, *Gahnia grandis*, *Pultenaea juniperina*, *Olearia viscosa*, *Phebalium squameum* and *Lomatia tinctoria*.

Protected drainage slopes contain a deep (0.70 m), stony, uniform, brown, medium clay. This supports an open forest to tall open forest dominated by *Eucalyptus obliqua* and *Eucalyptus brookerana* with an understorey of *Acacia dealbata*, *Pittosporum bicolor*, *Pomaderris apetala*, *Pteridium esculentum*, *Dicksonia antarctica*, *Nothofagus cunninghamii*, *Coprosma quadrifida*, *Gahnia grandis*, *Polystichum proliferum*, *Olearia lirata*, *Blechnum nudum*, *Leptospermum lanigerum* and *Cassinia aculeata*.

Major land uses are forestry, and grazing. The area is not prone to erosion problems but landslips can occur on the steeper slopes following major disturbance. The land system is related to the Mt Allen (472253) and Fingal Tier (472343) Land Systems.



Mount Elephant Land System with the Gray (564242) Land System